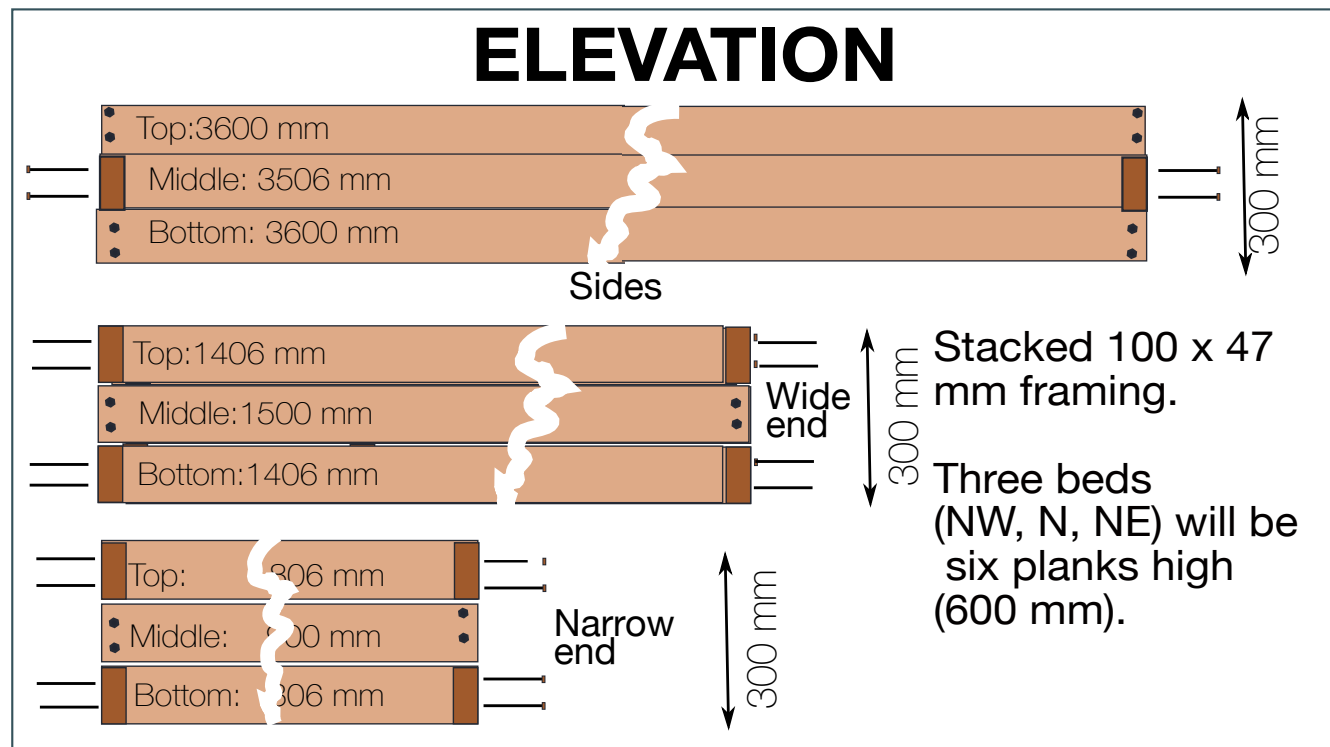
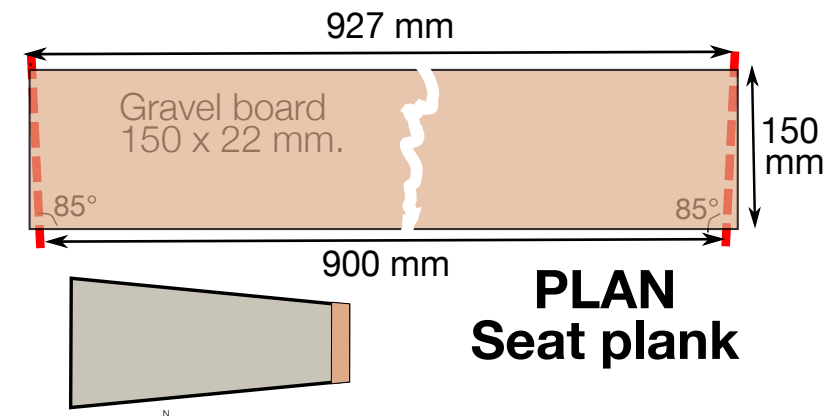
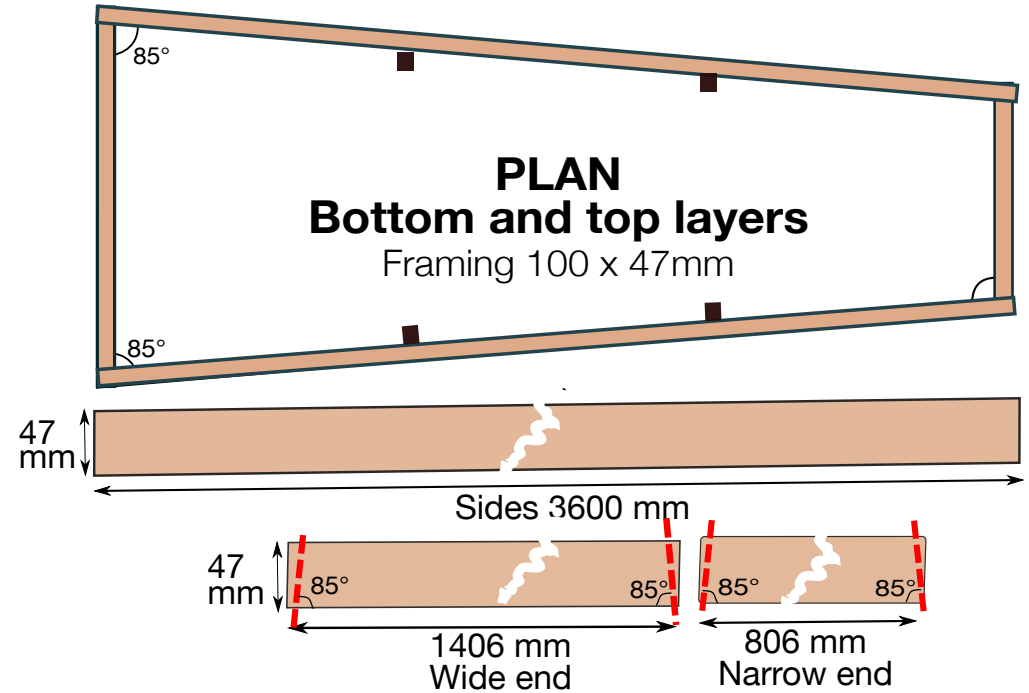
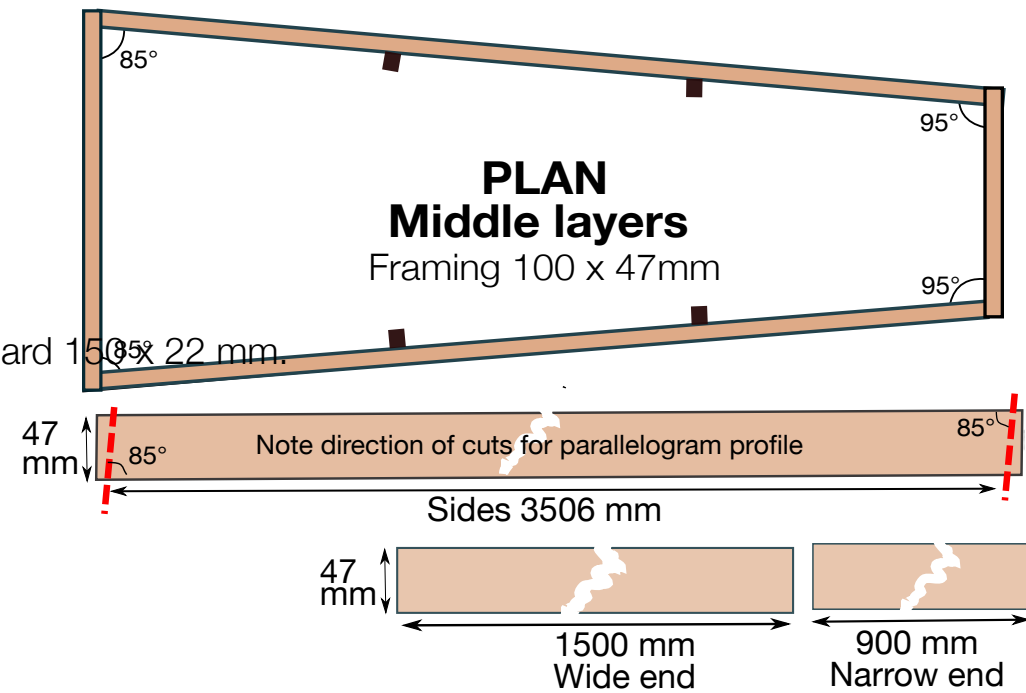


1. Mark site with pegs at centre of wide end of each bed.
2. Assemble bottom layer of each bed. using two 6.7 x 75 mm flange head screws (8 mm hex head) at each joint .Check critical distance (1.1 m) at narrow ends (for wheelchair access).
3. Make minor adjustments to other beds if this helps to overcome uneven ground, maintain approximate symmetry and orientation. Check first layer is level. Some turf removal or infill may be needed.
4. Complete next layers - three planks high, except for top NW, N and NE beds which are six planks high.
5. Do final check of angles, levels and critical distances before adding two stakes (47 x 47) to each long side to secure with 75 mm screws (8 mm hex driver bit).
6. Add seat planks to narrow ends of beds, secure with 4.5 x 50 mm countersunk screws (TX20 driver bit).
7. Line base with cardboard before adding topsoil and compost.
 Area of beds = $(1.5+0.9)/2 \times 3.59 = 4.308 \text{ m}^2$
 Volume of single height beds = $4.308 \times 0.3 = 1.29 \text{ m}^3$
 Volume of double height beds = $4.308 \times 0.6 = 2.58 \text{ m}^3$

Total volume of soil and compost
= $(1.29 \times 0.5 \times 5) + (2.58 \times 0.5 \times 3) = 7.1 \text{ m}^3$ of each

Downhorn Park Community Garden Raised Beds





PROPOSAL FOR A COMMUNITY GARDEN AND ENVIRONMENTAL IMPROVEMENTS

Downhorn Park, Plymouth

TREES, BUSHES AND SHRUBS

Existing

New planting (detailed survey of upper field in progress, to inform planting for 2022-3)

ORCHARD TREES

Existing

New planting (Autumn 2002)

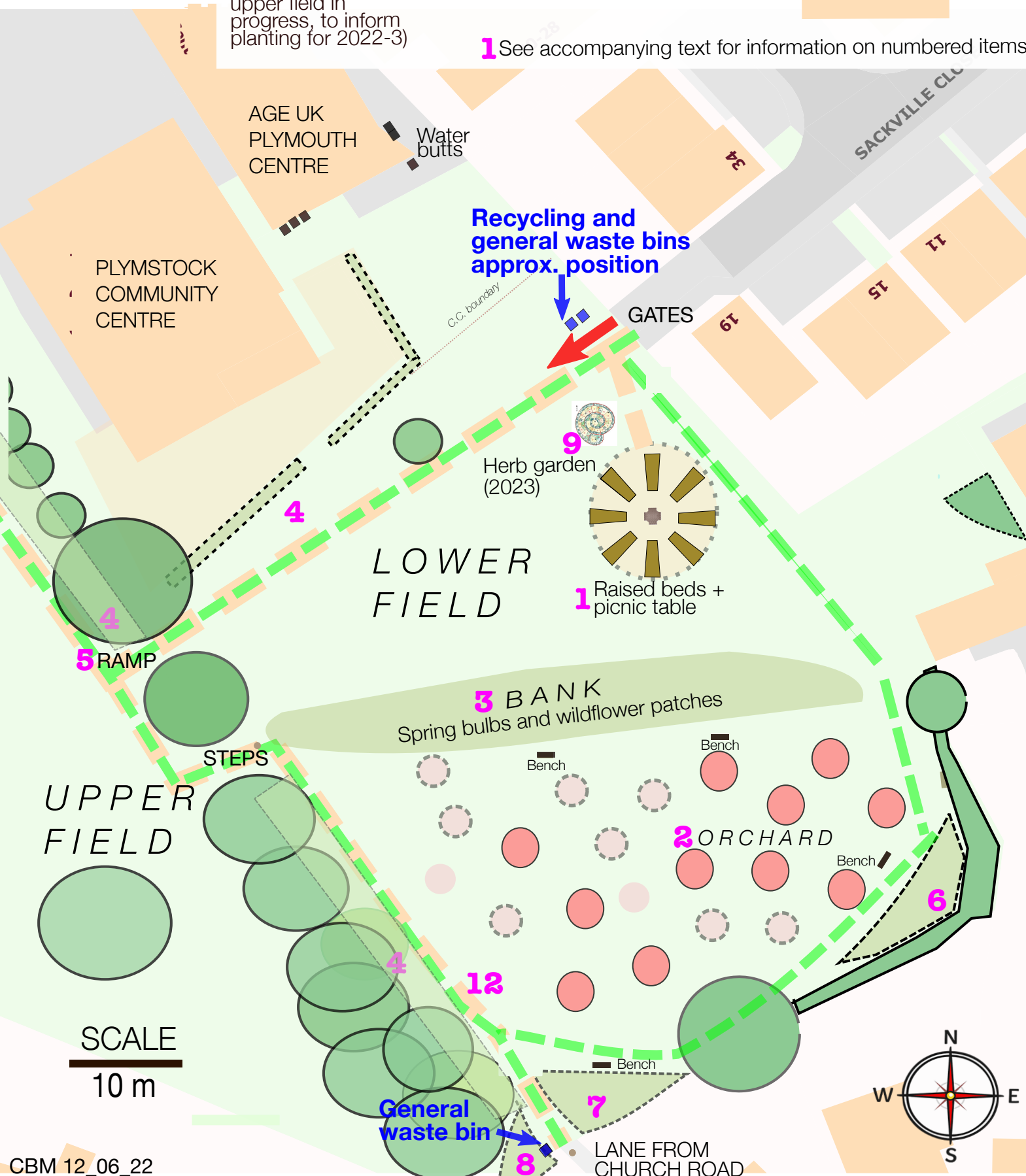
BENCHES

ENTRY FOR SERVICE VEHICLES

MOWN GRASS PATHS

PROPOSED ACCESSIBLE PATHS (2023?, 1.8m, resin or compressed aggregate, subject to funding)

1 See accompanying text for information on numbered items



SCALE
10 m





PROPOSAL FOR A COMMUNITY GARDEN AND ENVIRONMENTAL IMPROVEMENTS

Downhorn Park, Plymstock

TREES, BUSHES AND SHRUBS

Existing

New planting (detailed survey of upper field in progress, to inform planting for 2022-3)

ORCHARD TREES

Existing

New planting (Autumn 2002)

BENCHES

ENTRY FOR SERVICE VEHICLES

MOWN GRASS PATHS

PROPOSED ACCESSIBLE PATHS (2023?, 1.8m, resin or compressed aggregate, subject to funding)

1 See accompanying text for information on numbered items

New hedging suggested to screen bin area by the gate and along fences at rear of Sackville Close (needs to be low height). Community Centre don't want hedge on their land or adjacent to fence. Infill hedging (inc. taller species like elder, hawthorn?) along boundary walls. Semi-wild tayberries etc. at Leave spaces for compost bins/brash?

Water butts

Recycling and general waste bins approx position

new hedges

GATES

Herb garden (2023)



1 Raised beds + picnic table

LOWER FIELD

new hedging

3 BANK
Spring bulbs and wildflower patches

STEPS

UPPER FIELD

Bench

Bench

2 ORCHARD

Bench

12

General waste bin

LANE FROM CHURCH ROAD

SCALE
10 m

